

ABBOT'S HALL PRIMARY SCHOOL



Parent newsletter - April 2026

Message from Mr Pettitt

The summer term is always a busy term and it has been lovely to see the children engaged in their learning on our return after the Easter break. This term we can look forward to sports week, year group assemblies, class trips, Year 5 music performance, Year 6 production and the Summer fair. We hope you will be able to join us for some of these events. With the weather warming up please can we ensure all children have a drink bottle, hat and sun lotion to help protect them from the sun. Where possible, can sun lotion be administered before the start of the day and children shown how to administer a top up independently so they can do this as required.

Sports Day



Please see below the dates for the Abbot's Hall Sports Days for this year. Parents are invited in for the running races which will start at 2pm as in previous years.

Monday 8th June: Years 5 and 6.

Wednesday 10th June: Foundation Stage

Thursday 11th June: Years 1 and 2

Friday 12th June: Years 3 and 4

Reserve Days (PM)

Monday 15th June: Years 5 and 6

Tuesday 16th: Foundation Stage

Wednesday 17th June: Years 1 and 2

Friday 19th June: Years 3 and 4

School News

This term Mrs Flory has been running a news reporter club. These pupils have been busy finding out about news and events around the school. They will be writing some stories over the next two newsletters. We hope you enjoy reading them!



We are pleased to welcome Mrs Scarfe back from maternity leave in June, however she will be spending some time with us in the coming weeks before her full return.



Congratulations to Mrs Scrivener and a parent at our school (Gem) for completing the Manchester marathon. Thank you to everyone who donated, this was very much appreciated.

They raised a total of £3591! This will be donated to a family in our school community, following a life changing diagnosis.



Reminder



In the mornings, please can we ask that children do not play football on the playground.

Please can we also ask that children do not pick the flowers growing near our reading pod.

Thank you for your support.

You are invited!

If your child is in Phase 1 (FS and Y1) or Phase 2 (Y2 and Y3), look out for your Welcome Wednesday or Friendly Friday date.

This is an opportunity for you to come into school to take part in a short activity with your child.

School Uniform

Our new school uniform supplier is MyClothing.com and our dedicated online shop is now live. Uniform items can be ordered directly via the following link:

<https://myclothing.com/collections/abbots-hall-community-primary-school-15150/>

Please be reassured that current uniform can continue to be worn for the foreseeable future.

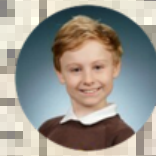


Our gingham summer dresses will now change to green.



Egyptian Day

by Nolan and Eliza



Egyptian day was on Thursday 16th April for 5CC and Friday 17th of April for 5FP. Lots of activities happened on these days: creating a full size small Egyptian boat and a full-size foundation for a house; the children and teachers dressed up in Egyptian clothes; and everyone made a pretend mummy.

We also interviewed some children in Mrs Childs' class. Myla said, 'It was amazing. We learnt the process of mummification and built a boat. The whole day was fascinating!' Isabelle said, 'It was so fun and we dissected some pretend faeces.'



We interviewed some children in Year 5 Miss Paterson's class. Elodie said, 'I enjoyed it because I got to act as the pharaoh's daughter and play dead.' Esme said, 'My favourite part was learning about Ancient Egyptians because it was very interesting.'

Year 4 The School Farm and Country Fair

by Isabelle and Lucy



Where: Trinity Park, Ipswich

What: The Country Farm Show

When: Thursday 16 April 2026

Who: Year 4

Why: Seeing the difference between modern farming and Greek farming

Miss Hudson:
I really liked
the animals.



Jenson:
Fun
Amazing
Remarkable
Memorable

Rubie-Mae: I liked how I
got to taste the apples
and stroke the animals.

Chester: I liked
stroking the goats.

Ellis: I liked meeting
the animals.

Luna-Rose: I enjoyed
seeing the sheep being
sheared.

Sophia: I liked seeing
the dog and horse
show.



Dates for the Diary

Friday 1st May 9am - Y4 Class Assembly - CANCELLED

Friday 8th May 9am - Y3 Class Assembly

Monday 11th May - Thursday 14th May - Year 6 SATS week

Tuesday 12th May - Y3 walk to the Rec

Friday 15th May 9am - Y2 Class Assembly

Wednesday 20th May 9.30am - New Parent Meeting

Wednesday 20th May - Y6 Motor Sports for Girls Day

Wednesday 20th May 5.30pm Frontier Centre Meeting

Friday 22nd May 9am - Y1 Class Assembly

Friday 22nd May - Last day of term

Monday 25th May - Friday 29th May - HALF TERM HOLIDAYS

Monday 1st June - PD DAY

Tuesday 2nd June - Return to school

Wednesday 3rd June 2.45pm - Y1 BD Welcome Wednesday

Thursday 4th June - FS Hollow Tree Farm Trip

Thursday 4th June - Y2 Foxburrow Farm Trip

Thursday 4th June - Year 1 Food Museum

Friday 5th June 2.45pm - Y2 LT Friendly Friday

Monday 8th June - Active week and Sports Days (see dates above)

Wednesday 10th June 2.45pm - Y1 TE/JC Welcome Wednesday

Friday 12th June 9am - FS Class Assembly

Wednesday 17th June 2.45pm - YR HB/ES Welcome Wednesday

Friday 19th June - Y6 Crucial Crew Trip

Friday 19th June 9am - Y5 Class Assembly

Friday 19th June 2.45pm - Y2 KS Friendly Friday

Monday 22nd June - Whole School Photo

Wednesday 24th June - Y3 Colchester Castle Trip

Wednesday 24th June 2.45pm - YR TP Welcome Wednesday

Friday 26th June 9am - Y4 Class Assembly

Friday 26th June 2.45pm - Y3 BR/AC Friendly Friday

Saturday 27th June - Summer Fair

Monday 29th June AM - Transition Morning

Monday 29th June - 3.15pm - Meet the Teacher

Tuesday 30th June AM - Transition Morning

Tuesday 30th June - 3.15pm - Meet the Teacher

Friday 3rd July 2.45pm - Y3 RM/ AC Friendly Friday

Wednesday 8th July - Friday 10th July - Y4 Frontier Centre Residential Trip

Friday 17th July 9am - Y6 Leavers Assembly

Friday 17th July - Last Day of Term.

Monday 20th July - PD Day

Tuesday 21st July - Monday 31st July - SUMMER HOLIDAYS

Tuesday 1st Sep + Wednesday 2nd Sep - PD Days

Thursday 3rd Sep - Return to school