

# King Charles III



Charles III became King on Thursday 8<sup>th</sup> September 2022 on the death of his mother Queen Elizabeth II. He serves with his wife Camilla by his side.

## Early Life

The King was born at Buckingham Palace on November 14<sup>th</sup> 1948. He is the oldest child of Queen Elizabeth II. Before he was King his title was Prince Charles.



## Family Life

Prince Charles married Lady Diana Spencer in 1981. They had two sons together called William and Harry. People hoped they would be happy but they separated in 1992.

## Later Life



In 2005 Prince Charles married Camilla who he had been friends with for a long time. The King loves gardening and he has a farm on his Highgrove estate.

## Charities and Causes

The Prince's Trust was set up in 1976. The trust helps children and young people to get an education and find jobs.

# Questions

1. Who was King Charles III's mother? Tick one.

- ☐ Camilla
- ☐ Queen Elizabeth II
- ☐ Prince Charles

2. When was King Charles III born? Tick one.

- ☐ 2022
- ☐ 1981
- ☐ 1948

3. What are the names of King Charles III's sons? Tick one.

- ☐ Charles and Edward
- ☐ William and Harry
- ☐ King and Queen

4. What does The King love doing? Tick one.

- ☐ horse riding
- ☐ cooking
- ☐ gardening

5. When was the Prince's Trust set up? Tick one.

- ☐ 1976
- ☐ 1992
- ☐ 2005

# Answers

1. Who was King Charles III's mother? Tick one.

- ☐ Camilla
- ☒ **Queen Elizabeth II**
- ☐ Prince Charles

2. When was King Charles III born? Tick one.

- ☐ 2022
- ☐ 1981
- ☒ **1948**

3. What are the names of King Charles III's sons? Tick one.

- ☐ Charles and Edward
- ☒ **William and Harry**
- ☐ King and Queen

4. What does The King love doing? Tick one.

- ☐ horse riding
- ☐ cooking
- ☒ **gardening**

5. When was the Prince's Trust set up? Tick one.

- ☒ **1976**
- ☐ 1992
- ☐ 2005

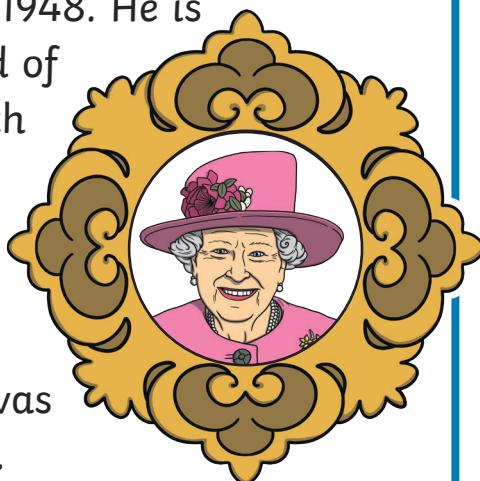
# King Charles III



Charles III became King on Thursday 8<sup>th</sup> September 2022 on the death of his mother Queen Elizabeth II. He will serve with his wife Camilla, the Queen Consort, by his side. Queen Consort is the title given to the wife of a King.

## Early Life

The King was born at Buckingham Palace on November 14<sup>th</sup> 1948. He is the eldest child of Queen Elizabeth II and her husband, Prince Philip. Before he was King his title was Prince Charles.



## Family Life



Prince Charles married Lady Diana Spencer on 29<sup>th</sup> July 1981. The country was very excited about the new couple. They had two sons together called William and Harry. The Prince and Princess of Wales were very popular. People hoped they would have a happy marriage but they separated in 1992.

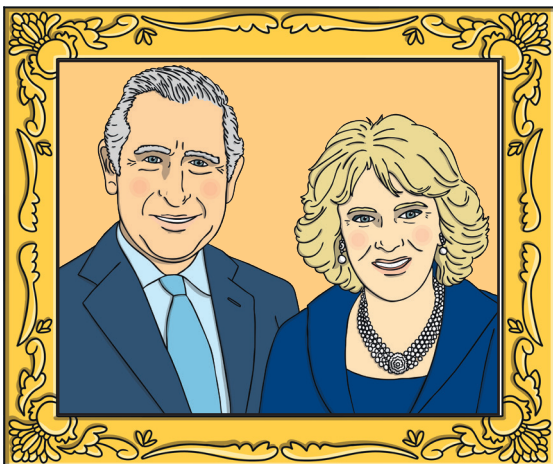


# King Charles III



## Later Life

In 2005 Prince Charles married Camilla who he had been friends with for a long time. Once they were married, Camilla became Her Royal Highness the Duchess of Cornwall. The King loves painting and gardening. He has a farm on his Highgrove estate.



## Charities and Causes

The Prince's Trust was set up in 1976 when Charles was still the Prince of Wales. The trust supports children and young people, helping them to pass exams and find jobs. King Charles III also cares a lot about the environment and climate change.



# Questions

1. What is the title of The King's wife? Tick one.

- ☐ Queen
- ☐ Queen Consort
- ☐ Princess

2. Where was King Charles III born? Tick one.

- ☐ Windsor Castle
- ☐ Highgrove
- ☐ Buckingham Palace

3. Look at this sentence.

Circle the word which tells you that King Charles is older than his brothers and sister.

He is the eldest child of Queen Elizabeth II and her husband,  
Prince Philip.

4. Look at the section called **Early Life**.

Find and copy one word which means a special name given to someone.

---

5. What are King Charles III sons called?

---

# Answers

1. What is the title of The King's wife? Tick one.

- ☐ Queen
- ☒ **Queen Consort**
- ☐ Princess

2. Where was King Charles III born? Tick one.

- ☐ Windsor Castle
- ☐ Highgrove
- ☒ **Buckingham Palace**

3. Look at this sentence.

Circle the word which tells you that King Charles is older than his brothers and sister.

He is the eldest child of Queen Elizabeth II and her husband, Prince Philip.

4. Look at the section called **Early Life**.

Find and copy one word which means a special name given to someone.

**title**

5. What are King Charles III sons called?

**William and Harry**

# King Charles III



Charles III became King on Thursday 8<sup>th</sup> September 2022 on the death of his mother Queen Elizabeth II. He will serve with his wife Camilla, the Queen Consort, by his side. Queen Consort is the title given to the wife of a King.

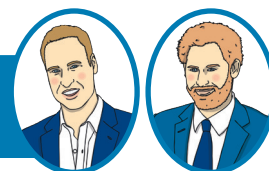
## Early Life

The King was born at Buckingham Palace on November 14<sup>th</sup> 1948. He is the eldest child of Queen Elizabeth II and her husband, Prince Philip. Before he was King his title was Prince Charles.

Prince Charles went to Cambridge University and became the first heir to the throne to get a degree. The young prince also learnt Welsh at the University College of Wales before he became Prince of Wales.



## Family Life



Prince Charles married Lady Diana Spencer on 29<sup>th</sup> July 1981. The country was very excited about the newlyweds. Together they had two sons, Prince William and Prince Harry. The Prince and Princess of Wales were a very popular couple. There were high hopes for them to have a happy marriage but they separated in 1992.

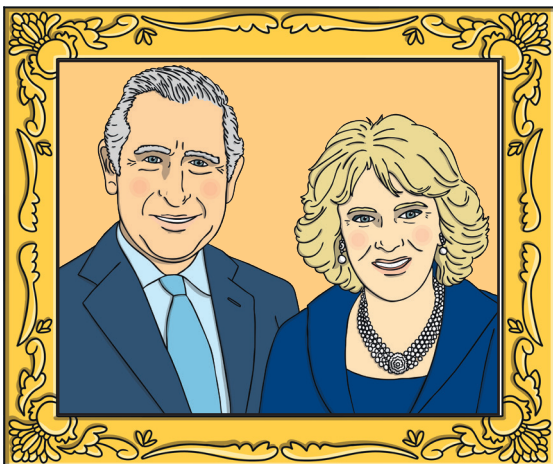


# King Charles III



## Later Life

In 2005 Prince Charles married Camilla Parker Bowles who he had been friends with for a long time. Once they were married, Camilla was given the title Her Royal Highness the Duchess of Cornwall. The King loves painting and gardening. He has a working farm on his Highgrove estate.



## Charities and Causes

The Prince's Trust was set up in 1976 when Charles was still the Prince of Wales. The aim of the trust is to support children and young people, helping them to get an education and guiding them towards successful jobs. King Charles III is also passionate about protecting the environment.

Queen Elizabeth II left an amazing legacy. The King will hope to earn the same love and respect that she enjoyed for so many years.

# Questions

1. Draw **three** lines and match each person to their relationship to The King.

Queen Elizabeth II

Prince William

Prince Philip

King Charles III's son

King Charles  
III's father

King Charles  
III's mother

2. When was the Prince's Trust set up? Tick one.

- ☐ 2005  
☐ 1992  
☐ 1976

3. Look at the section called **Early Life**.

Find and copy one word which means 'the person who will be the next monarch'.

---

4. Fill in the missing words.

The young prince also learnt \_\_\_\_\_ at the  
University College of Wales before he became Prince of Wales.

5. How do you think The King felt when he became the monarch?

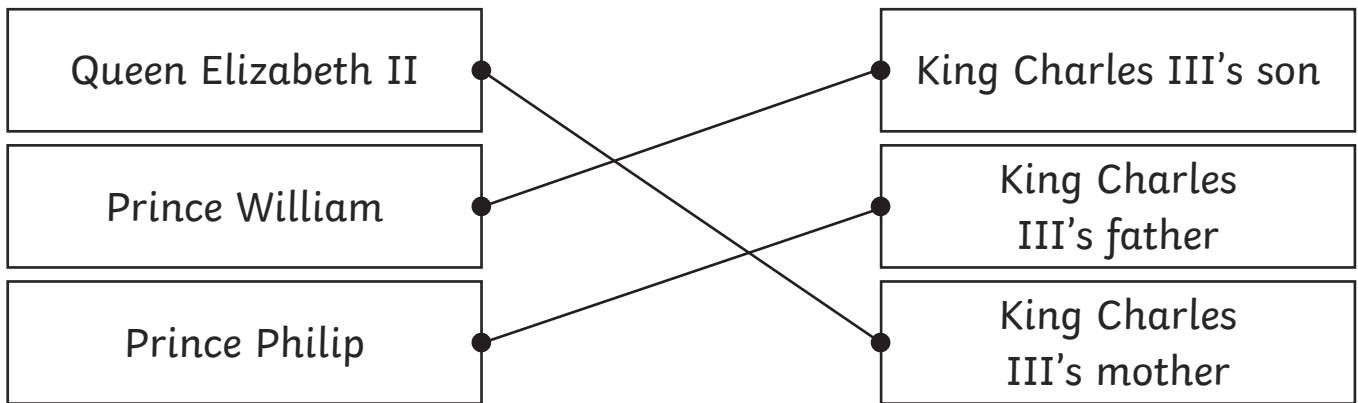
---



---

# Answers

1. Draw **three** lines and match each person to their relationship to The King.



2. When was the Prince's Trust set up? Tick one.

- ☐ 2005  
☐ 1992  
☒ 1976

3. Look at the section called **Early Life**.

Find and copy one word which means 'the person who will be the next monarch'.

**heir**

4. Fill in the missing words.

The young prince also learnt **Welsh** at the University College of Wales before he became Prince of Wales.

5. How do you think The King felt when he became the monarch?

**Pupils' own responses, such as: I think The King felt sad because his mother had just died but also proud of what she had achieved and inspired to follow in her footsteps.**